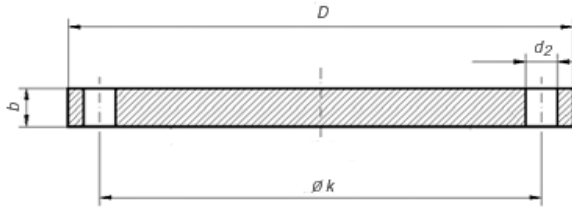


## EN 1092-1 TYPE 01 FLANGE PN6, PN10, PN16, PN25, PN40



### Dimensions & Approx Masses of EN 1092-1 TYPE 05 Flange

EN 1092-1 TYPE 05 PN6 BLIND FLANGE							
Diameter - Diametri	Flange - Fllanxhë			Screws - Vidhat , Dadot			Weight - Pesha (7,85 Kg/dm <sup>3</sup> )
	k	D	b	d2	Thread	Bolt holes - Vrimat	KG
15	55	80	12	11	M10	4	0,438
20	65	90	14	11	M10	4	0,657
25	75	100	14	11	M10	4	0,821
32	90	120	14	14	M12	4	1,180
40	100	130	14	14	M12	4	1,390
50	110	140	14	14	M12	4	1,620
65	130	160	14	14	M12	4	2,140
80	150	190	16	18	M16	4	3,430
100	170	210	16	18	M16	4	4,220
125	200	240	18	18	M16	8	6,100
150	225	265	18	18	M16	8	7,510
200	280	320	20	18	M16	8	12,300
250	335	375	22	18	M16	12	18,500
300	395	440	22	22	M20	12	25,500
350	445	490	22	22	M20	12	31,800
400	495	540	22	22	M20	16	38,500
450	550	595	24	22	M20	16	51,200
500	600	645	24	22	M20	20	60,100
600	705	755	30	26	M24	20	103,000
700	810	860	40	26	M24	24	178,000
800	920	975	44	30	M27	24	252,000
900	1020	1075	48	30	M27	24	336,000
1000	1120	1175	52	30	M27	28	435,000
1200	1340	1405	60	33	M30	32	717,000
1400	1560	1630	68	36	M33	36	1.094,000
1600	1760	1830	76	36	M33	40	1.545,000
1800	1970	2045	84	39	M36	44	2.131,000
2000	2180	2265	92	42	M39	48	2.862,000

1. SURFACE FINISH FACING TYPES A, B1, B2 etc							
2. FLANGE MARKING: LOGO EN 1092-1 / 05 / DN100 / PN6 / P245GH / HEAT NUMBER							
EN 1092-1 TYPE 05 PN10 BLIND FLANGE							
Diameter - Diametri	Flange - Fllanxhë			Screws - Vidhat , Dadot			Weight - Pesha (7,85 Kg/dm3)
	k	D	b	d2	Thread	Bolt holes - Vrimat	KG
200	295	340	24	22	M20	8	16,500
250	350	395	26	22	M20	12	24,100
300	400	445	26	22	M20	12	30,800
350	460	505	26	22	M20	16	39,600
400	515	565	26	26	M24	16	49,400
450	565	615	28	26	M24	20	63,000
500	620	670	28	26	M24	20	75,200
600	725	780	34	30	M27	20	124,000
700	840	895	38	30	M27	24	183,000
800	950	1015	48	33	M30	24	297,000
900	1050	1115	50	33	M30	28	374,000
1000	1160	1230	54	36	M33	28	492,000
1200	1380	1455	66	39	M36	32	842,000
1. SURFACE FINISH FACING TYPES A, B1, B2 etc							
2. FLANGE MARKING: LOGO EN 1092-1 / 05 / DN100 / PN10 / P245GH / HEAT NUMBER							

EN1092-1 TYPE05 PN16 BLIND FLANGE							
Diameter - Diametri	Flange - Fllanxhë			Screws - Vidhat , Dadot			Weight - Pesha (7,85 Kg/dm3)
	k	D	b	d2	Thread	Bolt holes - Vrimat	KG
15	65	95	16	14	M12	4	0,813
20	75	105	18	14	M12	4	1,140
25	85	115	18	14	M12	4	1,380
32	100	140	18	18	M16	4	2,030
40	110	150	18	18	M16	4	2,350
50	125	165	18	18	M16	4	2,880
65	145	185	18	18	M16	4	3,643
80	160	200	20	18	M16	8	4,610
100	180	220	20	18	M16	8	5,650
125	210	250	22	18	M16	8	8,130
150	240	285	22	22	M20	8	10,500
200	295	340	24	22	M20	12	16,200
250	355	405	26	26	M24	12	25,000
300	410	460	28	26	M24	12	35,100

350	470	520	30	26	M24	16	48,000
400	525	580	32	30	M27	16	63,500
450	585	640	40	30	M27	20	96,600
500	650	715	44	33	M30	20	133,000
600	770	840	54	36	M33	20	226,000
700	840	910	58	36	M33	24	285,000
800	950	1025	62	39	M36	24	388,000
900	1050	1125	64	39	M36	28	483,000
1000	1170	1255	68	42	M39	28	640,000
<b>1. SURFACE FINISH FACING TYPES A, B1, B2 etc</b>							
<b>2. FLANGE MARKING: LOGO EN 1092-1 / 05 / DN100 / PN16 / P245GH / HEAT NUMBER</b>							